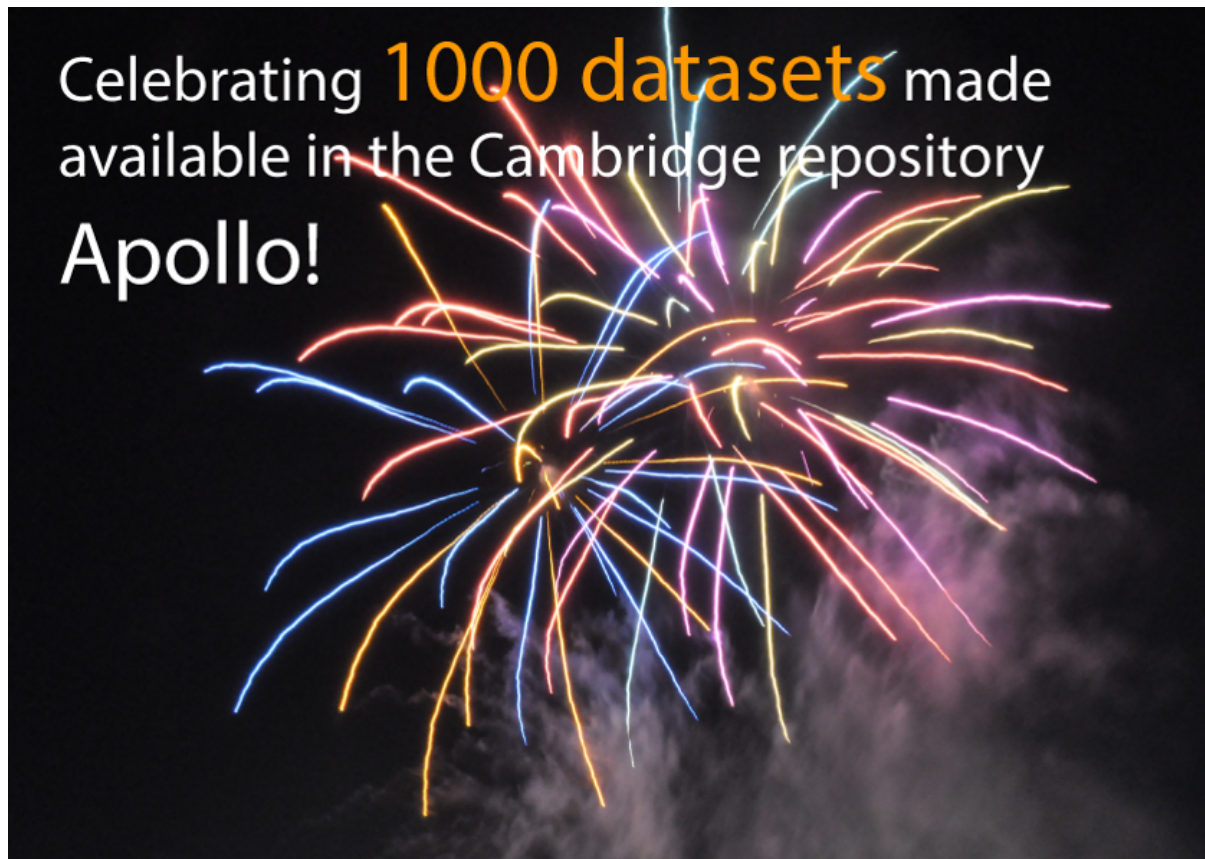


RDM Paris – The Cambridge & Bristol Story

Dr Jessica Gardner
University Librarian & Director of Library
Services, University of Cambridge

Modern Research Library Services



Research Excellence and Research Integrity

The screenshot shows a web browser window with the URL russellgroup.ac.uk. The browser's address bar and tabs are visible at the top. The Russell Group logo is on the left, and a search bar is in the center. A navigation menu includes 'About', 'Policy', 'News' (which is underlined), 'For students', and 'For business'. Below this is a breadcrumb trail: 'Home' > 'News' > 'THE World Univers...'. The main heading is 'THE World University Rankings 2018', with a 'Share' button and social media icons (Twitter, Facebook, LinkedIn, Email, and a plus sign). The article is dated '05 September 2017'. The text begins with 'Commenting on the latest THE World University Rankings, Acting Director of the Russell Group Dr Tim Bradshaw said:'. It then contains two paragraphs of text. The first paragraph states: 'These results serve as a timely reminder that higher education remains one of the UK's biggest success stories and one of our most valuable export industries.' The second paragraph states: 'While we would caution against using league tables in isolation to reach conclusions about the quality of any one institution or degree course, these new rankings paint a clear overall picture.' The third paragraph states: 'Russell Group universities, in particular, are holding their position near or at the top of the rankings despite increasing competition from other established and emerging nations. This is evidence that they retain an enviable global reputation for providing outstanding teaching and genuinely world-class research.' To the right of the article text, there are two sections: 'Media Enquiries' and 'Policy Enquiries'. The 'Media Enquiries' section lists Lynne Milford with the email lynne.milford@russellgroup.ac.uk and the phone number 0203 816 1316. The 'Policy Enquiries' section lists Sarah Stevens with the email sarah.stevens@russellgroup.ac.uk and the phone number 020 38161 306. At the bottom right, there is a section titled 'Related news and policy statements' with a date '13 January 2012' and the text 'ITV News interview on university application figures'.

RUSSELL GROUP






Search

Our Universities ▼

About Policy News For students For business

Home News THE World Univers...

THE World University Rankings 2018

Share     

05 September 2017

Commenting on the latest THE World University Rankings, Acting Director of the Russell Group Dr Tim Bradshaw said:

"These results serve as a timely reminder that higher education remains one of the UK's biggest success stories and one of our most valuable export industries.

"While we would caution against using league tables in isolation to reach conclusions about the quality of any one institution or degree course, these new rankings paint a clear overall picture.

"Russell Group universities, in particular, are holding their position near or at the top of the rankings despite increasing competition from other established and emerging nations. This is evidence that they retain an enviable global reputation for providing outstanding teaching and genuinely world-class research.

Media Enquiries

Lynne Milford
lynne.milford@russellgroup.ac.uk
0203 816 1316

Policy Enquiries

Sarah Stevens
sarah.stevens@russellgroup.ac.uk
020 38161 306

Related news and policy statements

13 January 2012

ITV News interview on university application figures

ETH Zurich statement on open research

‘The aim is to ensure the highest impact, transparency and reproducibility of the research results’ (ETH Zurich)

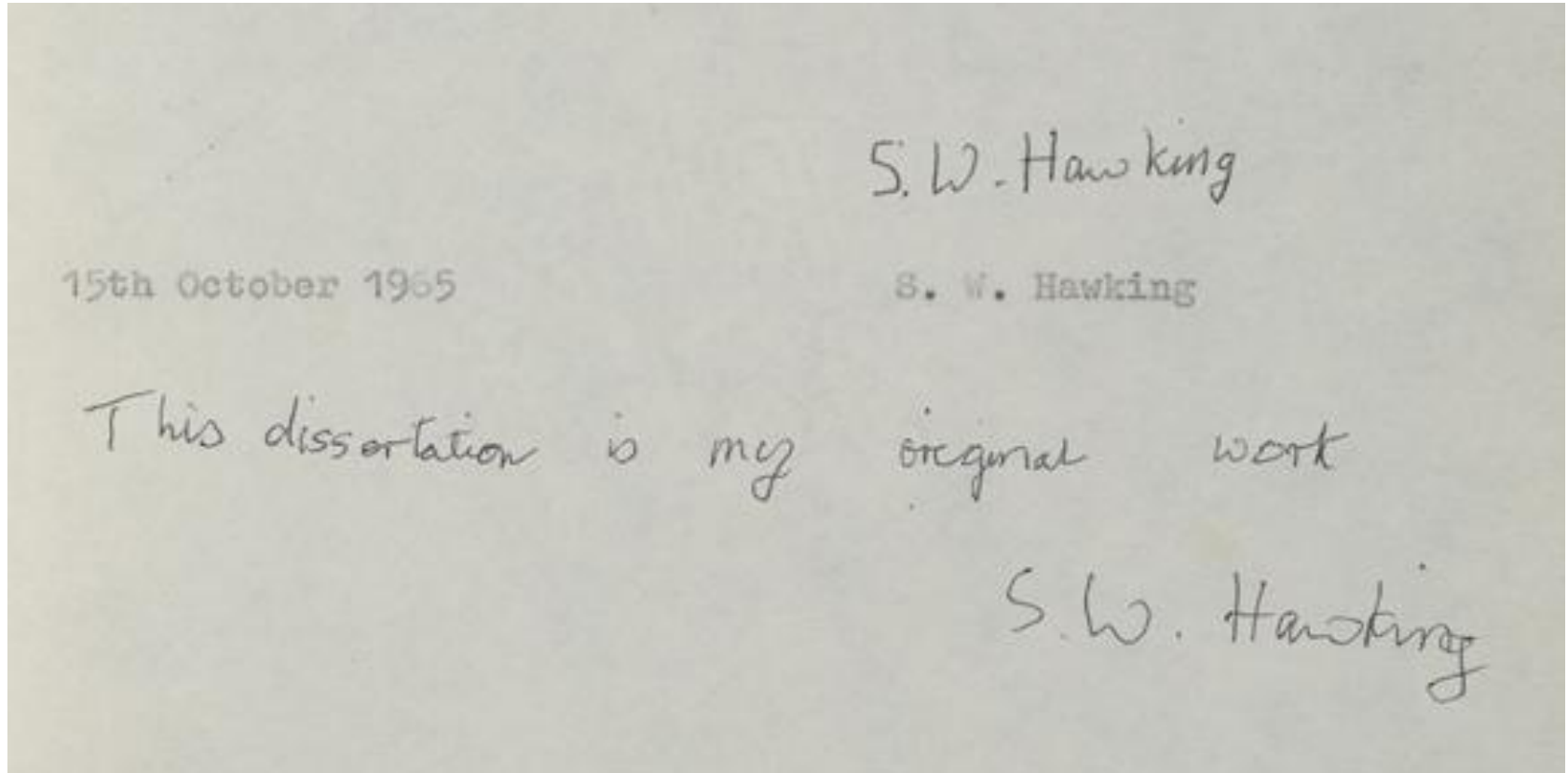
**Sir Isaac Newton's
bodkin experiment
Cambridge, c. 1669**

CUL, Add. 3975, p.15

<https://exhibitions.lib.cam.ac.uk/linesofthought/artifacts/changing-how-we-see/>



Professor Stephen Hawking's 1966 PhD, 'Properties of Expanding Universes'



<http://www.cam.ac.uk/research/news/step-inside-the-mind-of-the-young-stephen-hawking-as-his-phd-thesis-goes-online-for-first-time>

Research data supporting the publication of 'Inverse Scale Space Decomposition'

The screenshot shows a web browser window with the URL `repository.cam.ac.uk`. The page is the Apollo repository interface. At the top, there's a search bar with the text "Search Apollo" and a magnifying glass icon. Below the search bar, the main title of the dataset is "Research data supporting the publication 'Inverse Scale Space Decomposition'". On the left side, there's a sidebar with a "Browse" section containing links for "Communities & Collections", "Authors", "Titles", "Keywords", and "Type". Below this is a "This Collection" section with links for "Authors", "Titles", "Keywords", and "Type". Further down is a "Statistics" section with a link for "View Usage Statistics". The main content area on the right contains several sections: "Citation" with the text "Schmidt, M., Benning, M., & Schoenlieb, C. Research data supporting the publication 'Inverse Scale Space Decomposition'. [Dataset]. <https://doi.org/10.17863/CAM.13787>"; "Description" with the text "This dataset contains MATLAB® code for the numerical computation of the numerical examples described in Section 5.1 and Section 5.2 of the publication 'Inverse Scale Space Decomposition'."; "Software" with the text "The live script files require MATLABR2016a or newer. Older MATLAB versions, however, may still be able to open the script content of the live script files."; "Keywords" with the text "Generalised Singular Vectors, Inverse Scale Space Flow, Compressed Sensing"; "Sponsorship" with the text "Advanced Grant No. 291405 from the European Research Council as part of the project HD-Tomo."; "Identifiers" with the text "This record's DOI:"; and "View / Open Files" with a link for `inversescalespacedecompositioncode.zip` (application/zip, 180Kb). The authors listed are Schmidt, MF, Benning, Martin, and Schoenlieb, Carola-Bibiane. The publication date is 2017-10-20. The type is not explicitly stated.

repository.cam.ac.uk

The Open Research Data Task Force | www.universitiesuk.ac.uk/policy-and-analysis/resea... | Images of things that are open - Google Search | Research data supporting the publication "Invers...

Apollo

Search Apollo

Advanced search

Research data supporting the publication "Inverse Scale Space Decomposition".

Browse

All of Apollo

- > Communities & Collections
- > Authors
- > Titles
- > Keywords
- > Type

This Collection

- > Authors
- > Titles
- > Keywords
- > Type

Statistics

- > View Usage Statistics

View / Open Files

- [inversescalespacedecompositioncode.zip](#) (application/zip, 180Kb)

Authors

Schmidt, MF

- [Benning, Martin](#)
- [Schoenlieb, Carola-Bibiane](#)

Publication Date

2017-10-20

Type

Citation

Schmidt, M., Benning, M., & Schoenlieb, C. *Research data supporting the publication "Inverse Scale Space Decomposition"*. [Dataset]. <https://doi.org/10.17863/CAM.13787>

Description

This dataset contains MATLAB® code for the numerical computation of the numerical examples described in Section 5.1 and Section 5.2 of the publication "Inverse Scale Space Decomposition".

Software

The live script files require MATLABR2016a or newer. Older MATLAB versions, however, may still be able to open the script content of the live script files.

Keywords

Generalised Singular Vectors, Inverse Scale Space Flow, Compressed Sensing

Sponsorship

Advanced Grant No. 291405 from the European Research Council as part of the project HD-Tomo.

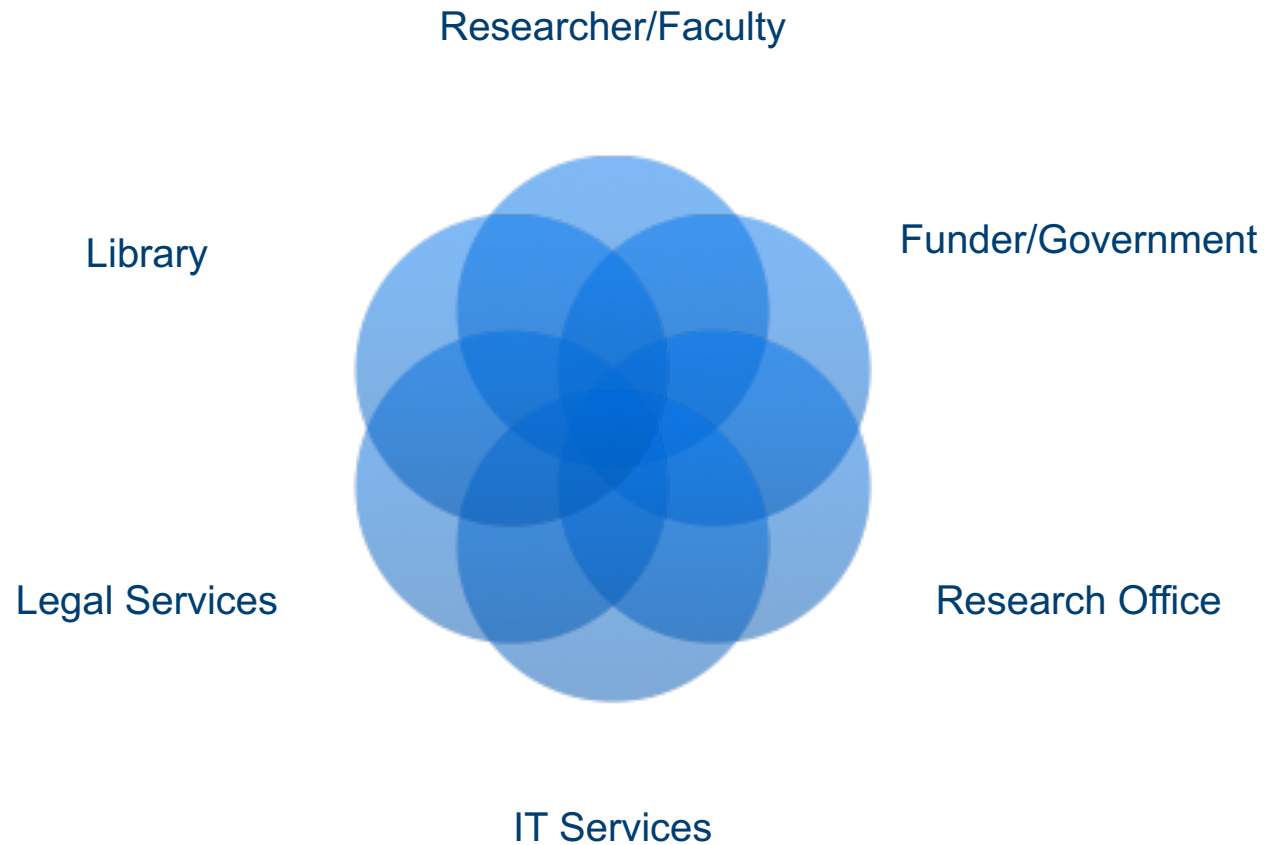
Identifiers

This record's DOI:

Open Research Library Services

Acquisition	Research publications Research data PhD theses Managing Open Access charges
Discovery and Dissemination	Repository Services for publications, PhDs and research data Library as publisher
Preservation	Preservation of research assets
Information, advice and guidance	Data Management Plans Open access support Copyright Training for researchers
Research & Development	Policy & advocacy New services, like Text Data Mining

Open Research Partnership



RCUK Common Principles on Data Policy

Home > [Research](#) > RCUK Common Principles on Data Policy

Making research data available to users is a core part of the Research Councils' remit and is undertaken in a variety of ways. We are committed to transparency and to a coherent approach across the research base. These RCUK common principles on data policy provide an overarching framework for individual Research Council policies on data policy.

Principles

- Publicly funded research data are a public good, produced in the public interest, which should be made openly available with as few restrictions as possible in a timely and responsible manner.
- Institutional and project specific data management policies and plans should be in accordance with relevant standards and community best practice. Data with acknowledged long-term value should be preserved and remain accessible and usable for future research.
- To enable research data to be discoverable and effectively re-used by others, sufficient metadata should be recorded and made openly available to enable other researchers to understand the research and re-use potential of the data. Published results should always include information on how to access the supporting data.
- RCUK recognises that there are legal, ethical and commercial constraints on release of research data. To ensure that the research process is not damaged by inappropriate release of data, research organisation policies and practices should ensure that these are considered at all stages in the research process.
- To ensure that research teams get appropriate recognition for the effort involved in collecting and analysing data, those who undertake Research Council funded work may be entitled to a limited period of privileged use of the data they have collected to enable them to publish the results of their research. The length of this period varies by research discipline and, where appropriate, is discussed further in the published policies of individual Research Councils.
- In order to recognise the intellectual contributions of researchers who generate, preserve and share key research datasets, all users of research data should acknowledge the sources of their data and abide by the terms and conditions under which they are accessed.
- It is appropriate to use public funds to support the management and sharing of publicly-funded research data. To maximise the research benefit which can be gained from limited budgets, the mechanisms for these activities should be both efficient and cost-effective in the use of public funds.

Further guidance and information on the individual principles can be found within the [guidance documentation](#).

A blog piece on supporting research data management costs through grant funding, including responses to questions raised at the DCC/RDMF Special Event on funding for Research Data Management, is available [here](#).

This policy was published in April 2011 and revised July 2015.



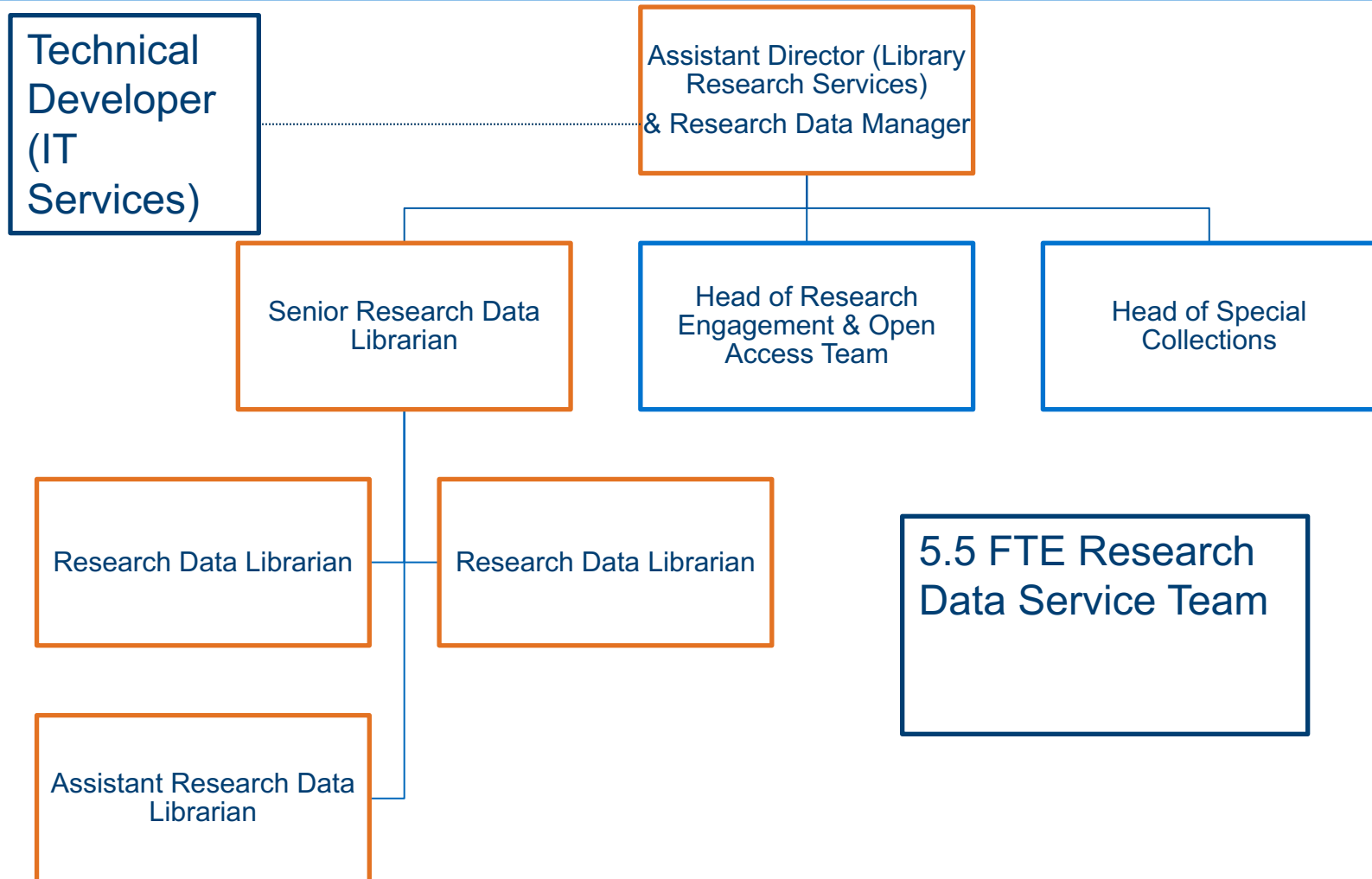
What is research data?



EVIDENCE

Information either **created** or **used** as an integral part of research. Data **underpins** research claims. May have high **re-use** value for other researchers.

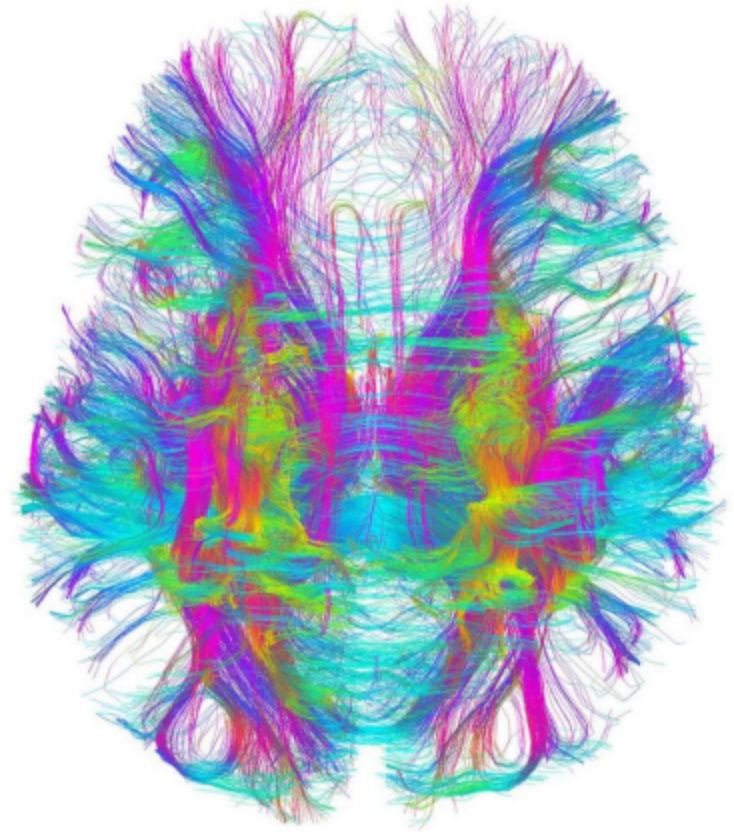
University of Bristol – Library Research Services



Planning Research Data in Biomedicine & Health Science

Bristol Research Data Service

data.bris.ac.uk



Brain activity - <http://mcgovern.mit.edu/>

Sensitive Data



[data \(PDF, 333 kB\)](#)

[Sharing data concerning human participants \(PDF, 438 kB\)](#)

[UKAN Anonymisation Decision-making Framework](#)

The Bristol University [data.bris Research Data Repository](#) can be used to share sensitive research data under controlled access arrangements. See [Publishing data under access restrictions](#) for more information.

[Interactive bootcamp tutorial - Sensitive research data →](#)

https://www.youtube.com/watch?time_continue=2&v=gFNznhrpls

University of Cambridge Research Data Services

Share your data



✉ info@data.cam.ac.uk
🌐 www.data.cam.ac.uk
🐦 @CamOpenData

Research Data Services:

- ⇨ Data repository
- ⇨ Funding policy information
- ⇨ Data management plan assistance



Share your publications



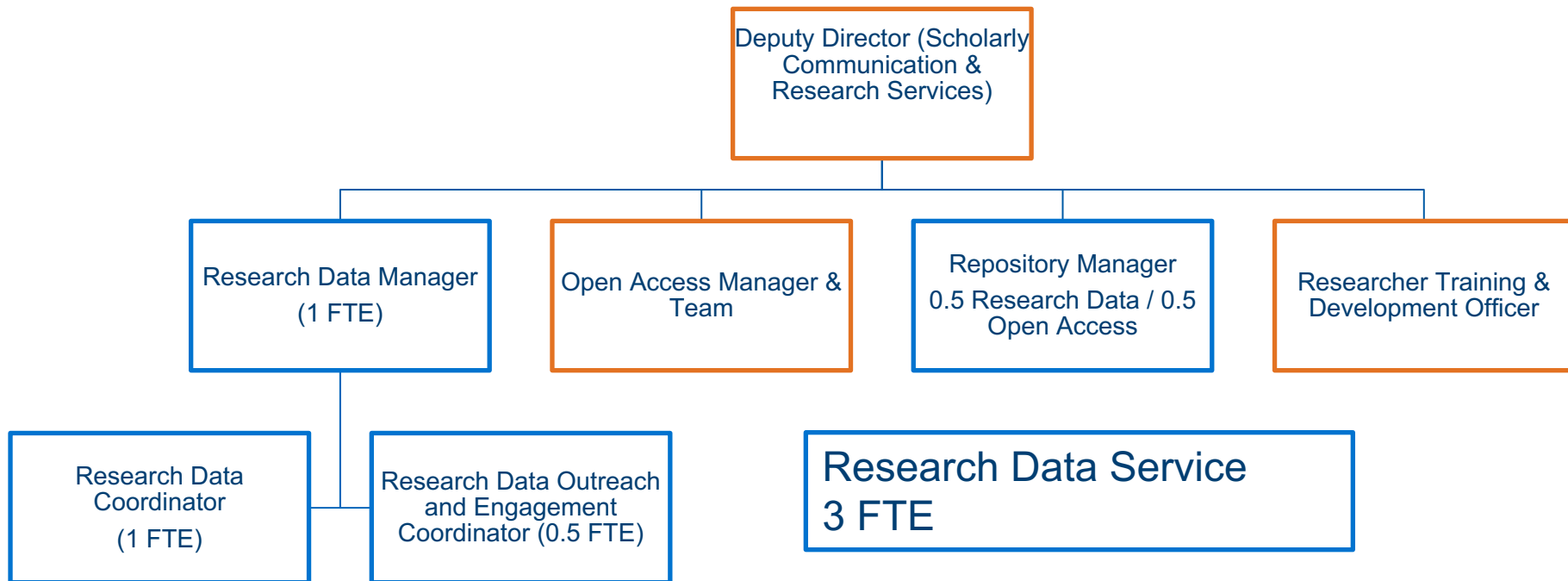
✉ info@openaccess.cam.ac.uk
🌐 www.openaccess.cam.ac.uk
🐦 @CamOpenAccess

Open Access Services:

- ⑧ Fully indexed repository
- ⑧ Funder compliance
- ⑧ Advice and support
- ⑧ Management of article processing charges



Cambridge OSC Team



newsletters

video

presentations

images

Audio and image files

articles

software

datasets



Apollo

maps

chemical structures

Working papers

webpages

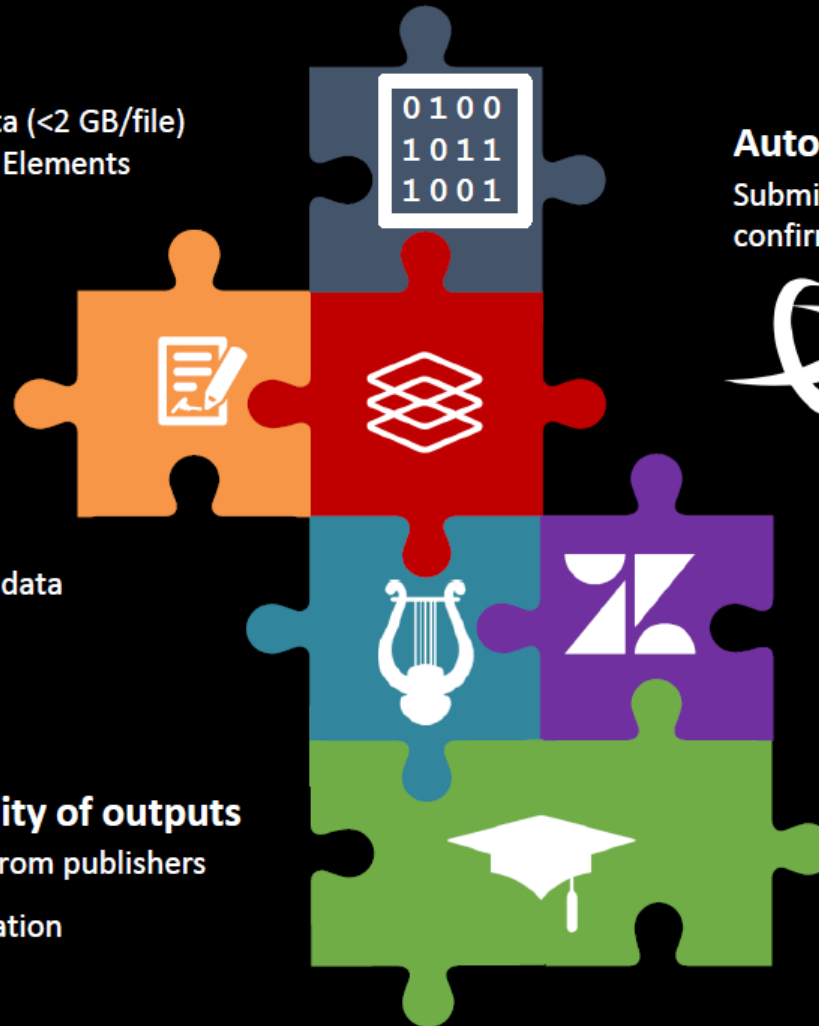
Conference
proceedings

theses

The integrated solution

Repository Tools 1

Automatic deposit of data (<2 GB/file)
and articles in Apollo via Elements



Automatic DOI minting

Submitters receive immediate email
confirmation of their dataset DOI

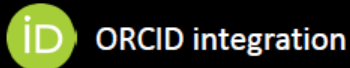


Enhanced reporting

Open Access Monitor: compliance data
available from a single source

Enhanced visibility of outputs

Automatic updates from publishers



Java Zendesk API

Tickets are created in the
workflow step

Jessica Gardner - jessica.gardner@lib.cam.ac.uk

